



E-ISSN: 2664-8784
 P-ISSN: 2664-8776
 IJRE 2024; 6(2): 21-26
 © 2024 IJRE
www.engineeringpaper.net
 Received: 21-06-2024
 Accepted: 27-07-2024

Iyebeye KO
 Department of Metallurgical
 and Materials Engineering,
 Delta State University, Ozoro,
 Delta State, Nigeria

Madubogwu IJ
 Department of Mechanical
 Engineering, University of
 Calabar, Cross-River State,
 Nigeria

Ekwedigwe CM
 Department of Metallurgical
 and Materials Engineering,
 Nnamdi Azikiwe University,
 Awka, Nigeria

Nwambu CN
 Department of Metallurgical
 and Materials Engineering,
 Nnamdi Azikiwe University,
 Awka, Nigeria

Correspondence
Nwambu CN
 Department of Metallurgical
 and Materials Engineering,
 Nnamdi Azikiwe University,
 Awka, Nigeria

Tensile behavior and electrical conductivity of cu-zn alloy doped niobium and tin of its material

Iyebeye KO, Madubogwu IJ, Ekwedigwe CM and Nwambu CN

Abstract

The study explored the effects of niobium (Nb) and tin (Sn) contents on the tensile behavior and electrical conductivity of Cu-30wt%Zn alloys. The brass was incorporated with varying concentrations of niobium and tin (0.1- 0.5wt% and 1.0-5.0wt% at 0.1 and 1.0 intervals respectively) and fabricated using a stir-casting technique. The Tensile strength, electrical conductivity, and resistivity were examined. The microstructures of the cast alloys were analyzed using a Scanning electron microscope (SEM), and Energy dispersive spectroscope (EDS). Results showed that the additions of niobium and tin refined and modified the structure of the alloy resulting in improvements in tensile strength, and electrical conductivity of the alloy, with 3wt% niobium and 5wt% tin recording the maximum tensile behavior performances and 0.1wt% niobium and tin exhibited the highest electrical conductivity.

Keywords: Tensile behavior, resistivity, conductivity, Cu-Zn alloy

Introduction

Copper and its alloys are significant among non-ferrous metals due to their exceptional electrical conductivity, thermal conductivity, corrosion resistance, ductility, malleability, and reasonable tensile strength. The electrical industry's ever-growing need for copper and its limited supply have prompted the search for more affordable alternatives to the now-expensive copper alloys (Ezeobi *et al.* 2024; Onyia *et al.* 2024; Okelekwe *et al.* 2024) [16, 6, 3]. Metallurgists have been improving the ductility of mild steel, and engineers have been devising more efficient metal-forming techniques. As a result, copper alloys are utilized in applications that require high electrical conductivity or suitable formability and good corrosion resistance (Iyebeye *et al.* 2024) [11]. Copper-based alloys encompass bronzes and brasses, with the latter being copper-rich alloys that contain tin, zinc, silicon, or beryllium (Nwambu, 2017) [5]. Brass is a popular industrial material due to its exceptional combination of properties, such as high strength and ductility (which make it stronger and harder than pure copper), ability to be easily shaped into various forms, good thermal and electrical conductivity, non-magnetism, and resistance to corrosion (particularly in saltwater environments). These properties make brass the preferred material for many components used in the general, electrical, and precision engineering industries (Kommel and Hussainova, 2007; Okelekwe *et al.* 2024) [3, 4]. In particular, the electronic and electrical components market with high performance and multi-functionality has increased, and the amount of Cu-Zn alloys in these products has also enlarged. On the other hand, a weight reduction of parts and products is strongly required to improve the energy efficiency of transport equipment or products miniaturization. The effect of Cu-Zn alloy parts with high specific gravity on the weight ratio of the total product is significant. It is possible to produce the small parts using the high-strength Cu-Zn alloy. As a result, the product's weight will be reduced significantly (Imai *et al.*, 2014; Anyafulu *et al.* 2024) [8, 1].

Cu-Zn alloy, also known as brass, is utilized in manufacturing bulb and fuse sockets due to its favorable plastic properties and ability to be cold stamped. Additionally, it is employed in producing wires, gliding components, and sieve bottoms for condensers in the shipbuilding industry. Because of its exceptional thermal conductivity and corrosion resistance, brass is frequently used to create heat exchanger tubes (Iyebeye *et al.* 2024) [11]. The mechanical characteristics of brass rely mainly on the amount of zinc, the degree of deformation during production, and the heat treatment parameters, precisely the recrystallization temperature. Brass is also utilized to produce various other products such as pipes, tubes, weather-stripping, architectural trim pieces, screws, radiators, musical instruments, and cartridge casting for firearms, making it an essential material where long-lasting,

economical service life is necessary and unmatched by other materials (Nowosielski and Sakiewicz, 2006)^[10].

Copper and its alloys have been used for various applications for many years because of their outstanding properties. Nonetheless, pure copper is not suitable for structural engineering purposes due to its low strength and tendency to soften at moderate temperatures (Zhao *et al.* 2017; Osakwe *et al.* 2024; Nwambu *et al.* 2024)^[12, 17, 15]. Research has focused on developing copper-based alloys to enhance properties like strength, conductivity, and the ability to maintain stress at high temperatures. Alloying has proven to improve the mechanical and physical properties of copper (Arisgraha *et al.* 2018; Zhuangzhuang *et al.* 2020)^[2, 9]. Additionally, by altering their composition and applying different heat treatments, copper alloys can be given a diverse range of properties. For this reason, they probably rank next to steel in importance to the engineer (Zuhail, 2015)^[20]. In Cu-Zn alloys, the zinc atoms replace copper atoms to create a substitutional solid solution that is random and non-homogeneous. This leads to the formation of brittle coarse phase that causes a decrease in the mechanical and physical properties of the alloy. To study the influence of rare earth metals and carbide forming elements on the structure, physical, and mechanical properties of copper - 30%zinc alloy.

Material and Methods

The base alloy for the study was produced from commercial pure copper (99.99%) and commercial pure zinc (99.98%). The doped Cu-30%Zn alloy was produced by the addition of niobium and tin in concentrations of 0.1%, 0.2%, 0.3%, 0.4%, 0.5%, 1.0%, 2.0%, 3.0%, 4.0%, and 5.0% by weight using permanent mould casting technique. A bailout crucible furnace was used for the melting process. For the production of the control alloy cast samples, the required amounts of pure copper in the form of copper wire were first charged into the preheated furnace and melted. A predetermined amount of zinc in piglet form was added to the molten copper and stirred. The melt was held for about 15 minutes to ensure the complete dissolution of zinc in the copper melt and stirred again to achieve homogeneity before pouring into a preheated permanent mold and allowed to

cool at room temperature. Subsequently, the Cu-30wt%Zn alloys with the additives were produced by repeating the above-described procedure and introducing the different concentrations of niobium and tin. A tensile test was carried out on the cast specimens using an automated 100KN JPL tensile strength tester (Model: 130812) to determine the tensile strength (Iyebeye *et al.* 2024)^[11]. The resistivity and conductivity of the experimental alloys were determined based on standard Ohm's experiment. Structural analysis was carried out on the cast alloy specimens. Before the structural analysis, the surfaces of the specimens were ground with different grades of emery papers from rough to fine grades (200, 400, 600, 800, and 1200 μm). After grinding, the specimens were polished to a mirror finish using an aluminum oxide (Al_2O_3) powder, rinsed with water, and dried using a hand drier. The dried samples were etched with a solution of 10 g of iron (III) chloride, 30 cm^3 of hydrochloric acid, and 120 cm^3 of water for 60 seconds. Finally, the surface morphology of the etched samples was examined using scanning electron microscopy (SEM) and energy dispersive spectroscopy (EDS).

Results and Discussions

Tensile behavior, Conductivity, and Resistivity of Cu-30wt%Zn Alloy

Figures 1-3 show the effect of niobium and tin addition on the electrical conductivity and resistivity, and tensile behavior of the alloy. It is observed from the Figures that the tensile strength increased with increasing concentration of niobium and tin up to 3.0% for niobium before decreasing with further increase in concentration of the additive but for Tin, it increased up to 5.0%. The addition of niobium and tin to Cu-30wt%Zn alloy resulted in improvement in the tensile strength of the experimental alloy. Maximum tensile strength values obtained were 614 MPa at 4.0%Nb, 371MPa at 1.0%Sn content respectively. The addition of 0.1wt%Nb and Sn resulted in an improvement in electrical conductivity of the alloy. The improvement in the tensile behavior and electrical conductivity of the alloys was attributed to the presence of refined and modified intermetallic phases in the structure of the alloys (Onyia *et al.* 2024)^[6].

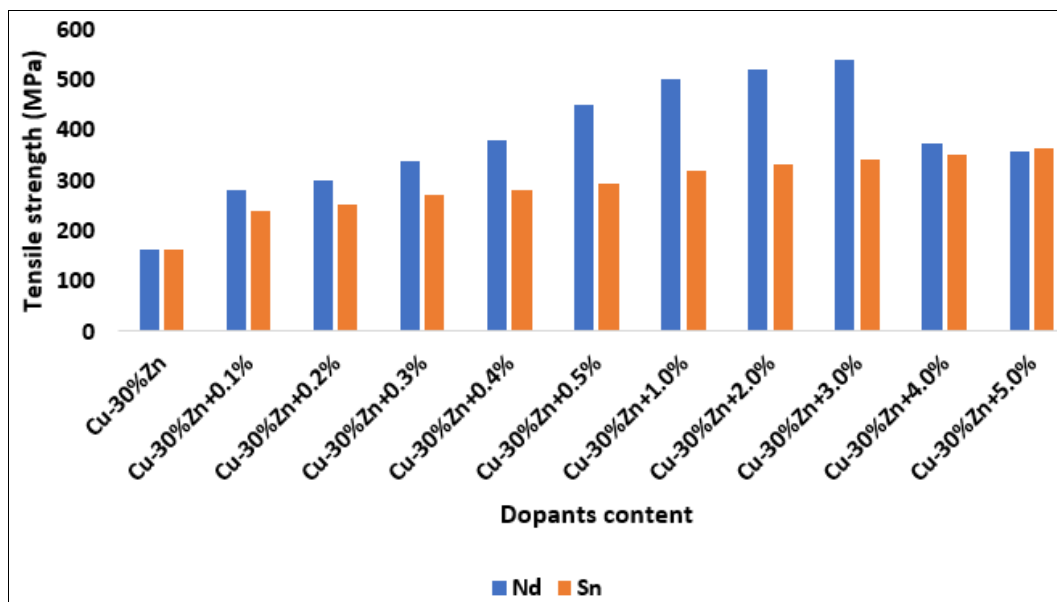


Fig 1: Effect of niobium and tin content on the tensile strength of Cu-30wt%Zn alloy.

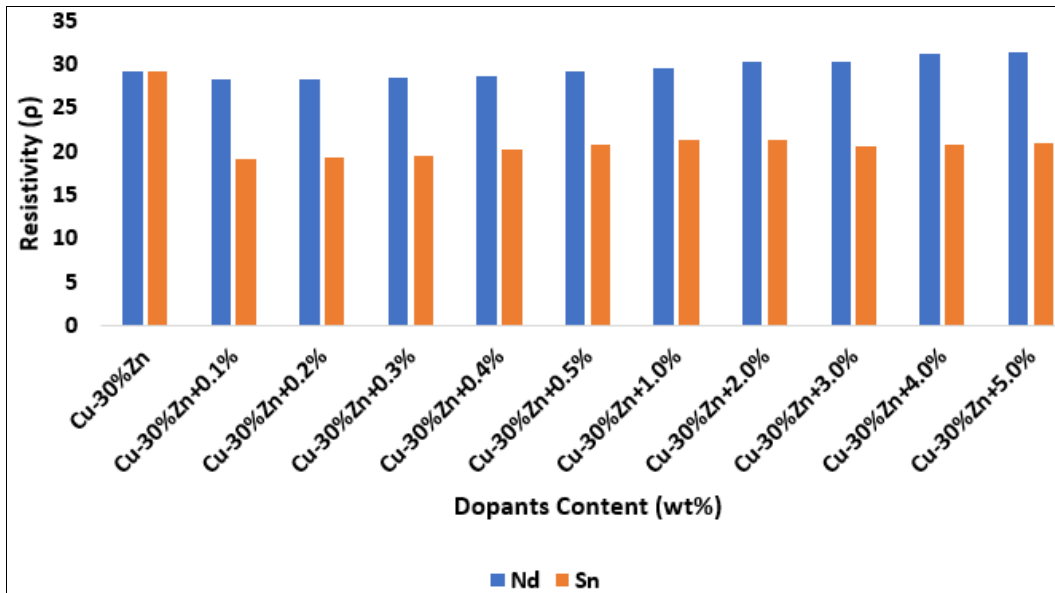


Fig 2: Effect of niobium and tin content on the electrical resistivity of Cu-30wt%Zn alloy.

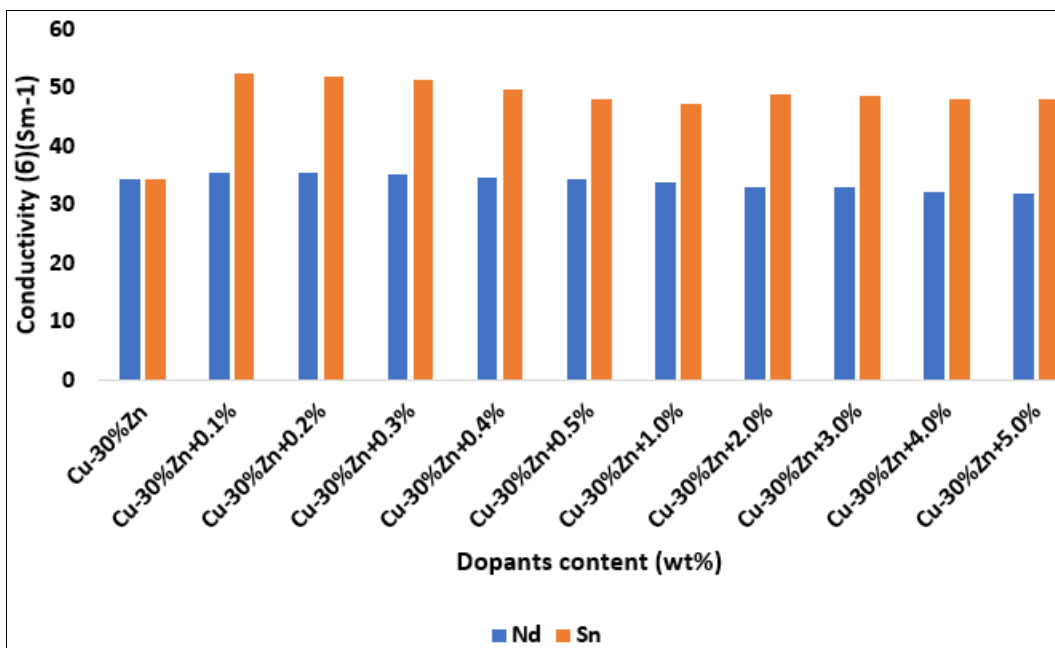


Fig 3: Effect of niobium and tin content on the electrical conductivity of Cu-30wt%Zn alloy.

Scanning Electron Microscopy (SEM) and Electron Dispersive X-ray (EDX) Analyses of the Alloys

The scanning electron microscopy and electron dispersive X-ray diffraction analyses of the alloys are presented in Figures 4-9.

The structure of the niobium and tin-doped alloys shows the existence of CuZn5, Cu5Zn8, Cu3Nb, and Cu5Sn intermetallic phases (Figure 4-9). The presence of these intermetallics in the alloys' structure is also demonstrated by studies of the alloy samples using electron dispersive X-ray (EDX) and scanning electron microscopy (SEM). The morphology of the intermetallic compounds is refined and altered by the addition of niobium and tin, which is seen to boost tensile strength. This is because microstructural changes, such as grain refinement, can produce higher

mechanical qualities overall. Certain alloying elements can increase ultimate tensile strength and hardness while simultaneously enhancing or preserving ductility, and materials with fine-grained structures are frequently stronger and more ductile. Grain size falls as niobium concentration rises to 3.0wt%Nb and 5.0wt%Sn. Because there are more grain boundaries because of the smaller grain sizes, there are more obstacles to dislocation motion, which raises the alloys' tensile strength. An increase in niobium concentration above 3.0wt% coarsened the intermetallic compounds' morphology, lowering the alloy's tensile strength. Cu3Nb and Cu3Sn compounds incorporated into the alloy's structure significantly enhanced its electrical conductivity and strength (Iyebeye *et al.* 2024) [11].

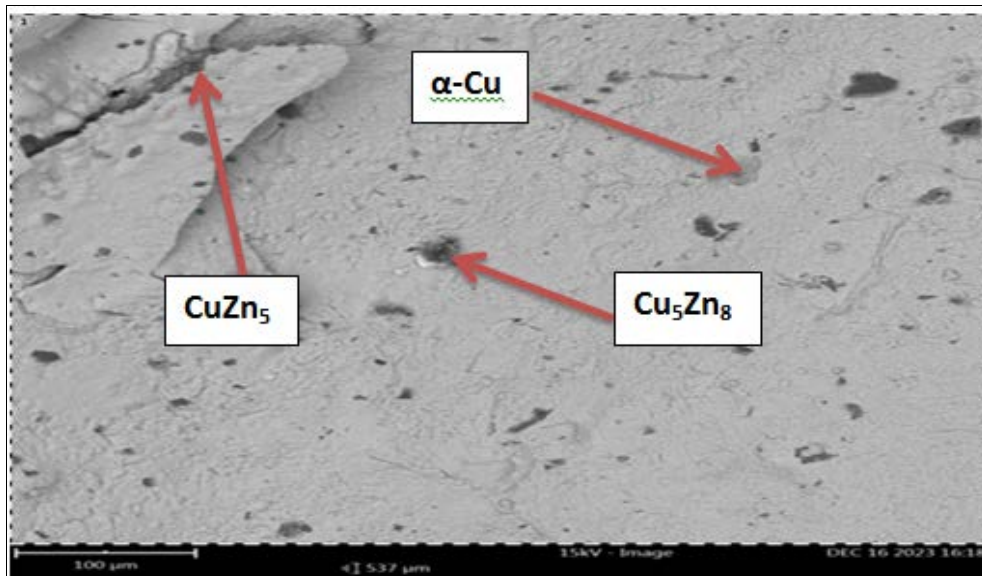


Fig 4: Scanning electron microscopy of Cu-30wt%Zn alloy

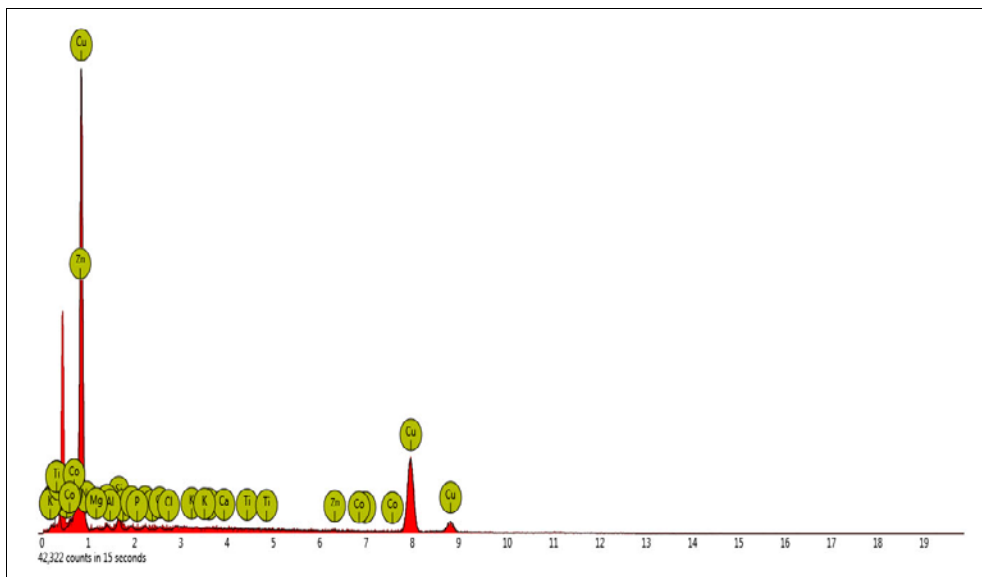


Fig 5: Energy dispersive X-ray diffraction (EDX) of Cu-30wt%Zn alloy.

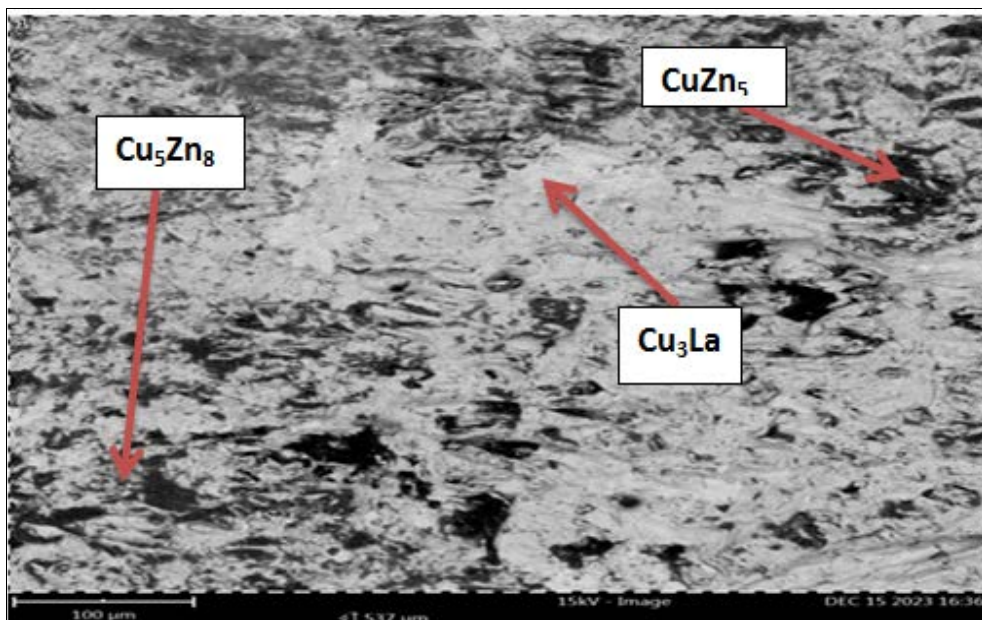


Fig 6: Scanning electron microscopy of Cu-30wt%Zn+3.0wt%Nb alloy

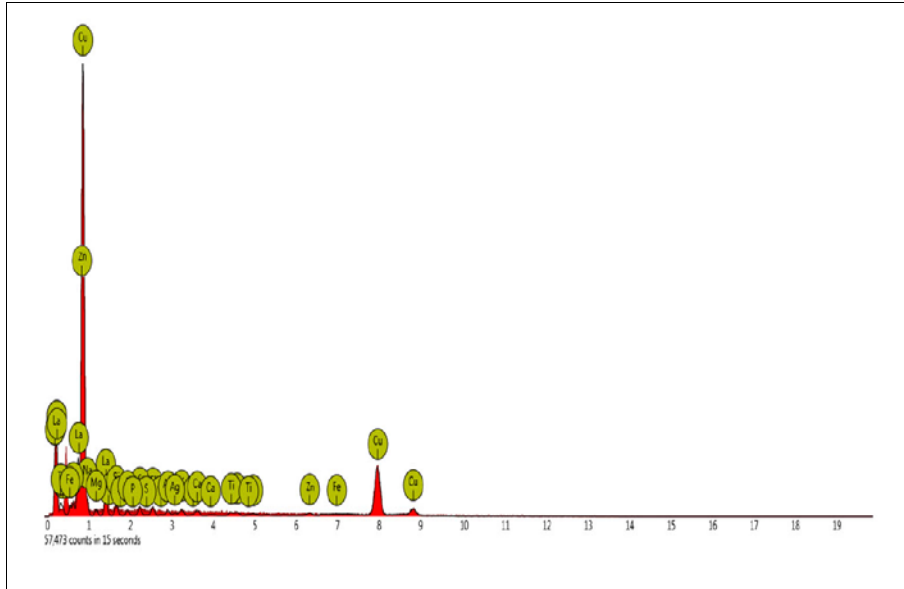


Fig 7: Energy dispersive X-ray diffraction (EDX) of Cu-30wt%Zn+3.0wt%Nb alloy.

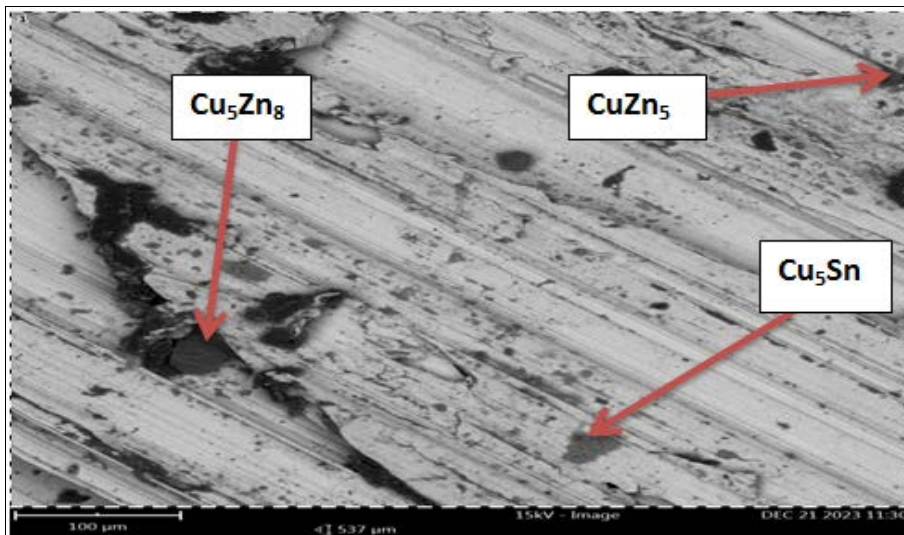


Fig 8: Scanning electron microscopy of Cu-30wt%Zn+5.0wt%Sn alloy

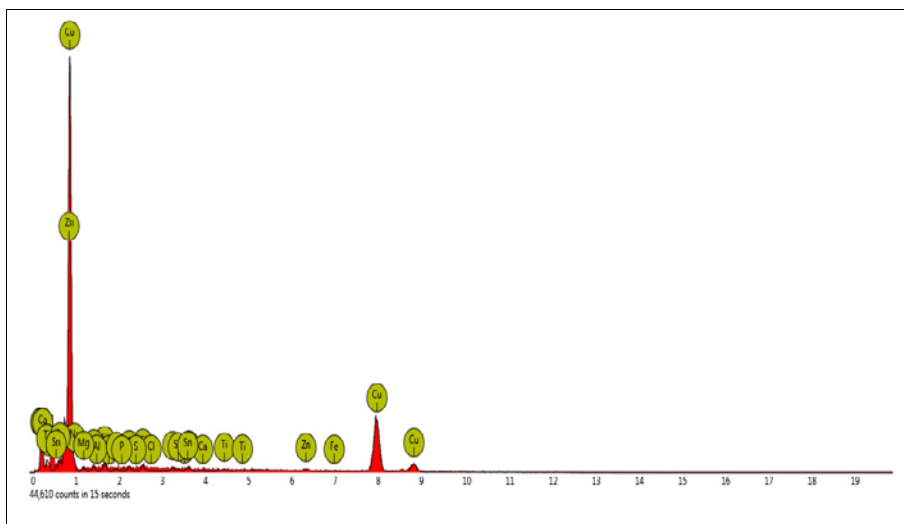


Fig 9: Energy dispersive X-ray diffraction (EDX) of Cu-30wt%Zn+5.0wt%Sn alloy.

Conclusion

The impact of niobium and tin content on the electrical conductivity and tensile behavior of Cu-30wt%Zn alloy has

been studied. The outcomes of the experiment allow for the following deductions: By successfully refining and altering the alloys' structure, the addition of niobium and tin to Cu-

30wt%Zn alloy improved the experimental alloy's mechanical and physical characteristics. When comparing niobium and tin's effects on Cu-30wt%Zn, lanthanum performed better than tin. It was also determined that the characteristics of the Cu-30wt%Zn alloy were better after macro alloying than after micro alloying.

References

1. Anyafulu UV, Ekwedigwe CM, Nwambu CN, Nnuka EE. Effect of Bismuth and Lead on the Mechanical Properties of Aluminium-4% Copper Alloy. *UNIZIK J Eng Appl Sci.* 2024;3(2):691-8.
2. Arisgraha A, Irene A, Arandana A, Bondan S. Effects of additive on the characteristics of Cu-28Zn brass, produced by gravity casting. *IOP Conf Ser Mater Sci Eng.* 2018;28(5):012031.
3. Okelekwe MN, Nwambu CN, Nnuka EE. Correlation of the Structure, Mechanical, and Physical Properties of Cu-4wt%Mg-xwt%Co Alloy. *J Emerg Technol Innov Res.* 2024;11(4):10.
4. Kommela L, Hussainovaa I, Volobueva O. Microstructure and properties development of copper during severe plastic deformation. *Mater Des.* 2007;28(7):2121-8.
5. Nwambu CN, Anyaeche IM, Onwubiko GC, Nnuka EE. Modification of the structure and mechanical properties of aluminum bronze (Cu-10% Al) alloy with zirconium and titanium. *Int J Sci Eng Res.* 2017;8(1):1048-57.
6. Onyia CW, Nnuka EE, Nwambu CN. Influence of chromium on the structure and physic-mechanical properties of Cu-3wt% Si alloys. *UNIZIK J Eng Appl Sci.* 2024;3(1):400-8.
7. Onyia CW, Nnuka EE, Nwambu CN, Ekwedigwe CM. Effect of Titanium Content on the Structure, Electrical Conductivity and Mechanical Properties of Cu-3wt% Si Alloys. *Open Access Libr J.* 2024;10(12):1-14.
8. Imai H, Shufeng L, Katsuyoshi K, Takuya O. Microstructure and Mechanical Properties of Cu-40%Zn0.5%Cr Alloy by Powder Metallurgy. *Jpn Soc Powder Powder Metall.* 2014;55(3):528-33.
9. Zhuangzhuang D, Jinchuan J, Bowen D, Xianlong W. Effect of aluminum addition on microstructure and properties of a novel nickel-silicon-containing brass. *J Mater Res.* 2020;35(12):1598-161.
10. Nowosielski R, Sakiewicz P. Ductility minimum temperature phenomenon in as-cast CuNi25 alloy. *J Achiev Mater Manuf Eng.* 2006;17:193-6.
11. Iyebeye KO, Nwambu CN, Nnuka EE. Investigating the effects of Lanthanum and Tin additions on the structure and physic-mechanical properties of Cu-30% Zn Alloy. *UNIZIK J Eng Appl Sci.* 2024;3(2):735-55.
12. Nwambu CN, Ekwedigwe CM, Iyebeye KO, Osakwe F. Mechanical Behaviors of Copper-Aluminium-Titanium Alloy. *UNIZIK J Eng Appl Sci.* 2024;3(2):685-90.
13. Nwambu CN, Iyebeye KO, Ekwedigwe CM, Osakwe FO. Effect of Dopants Particulates on the Structure and Mechanical Properties of Copper-12wt% Aluminium Alloy. *UNIZIK J Eng Appl Sci.* 2024;3(2):675-84.
14. Okelekwe NM, Nwambu CN, Nnuka EE. Influence of chromium addition on the microstructural and mechanical properties of copper-magnesium alloys. *UNIZIK J Eng Appl Sci.* 2024;3(2):699-708.
15. Osakwe FO, Ekwedigwe CM, Iyebeye KO. Structure and Mechanical Properties of Doped Cu 10wt%Sn Alloy. *Adv J Sci Eng Technol.* 2024;9(9):63-74.
16. Ezeobi UE, Nwambu CN, Nnuka EE. Influence of heat treatment parameters on mechanical properties and microstructure of Cu-10wt% Si-2wt% Ni alloy. *UNIZIK J Eng Appl Sci.* 2024;3(2):666-74.
17. Zhao C, Zhang W, Wang Z, Li D, Luo Z, Yang C, *et al.* improving the mechanical properties of Cu-15Ni-8Sn alloys by addition of titanium. *Materials.* 2017;10(9):1038. <https://doi.org/10.3390/ma10091038>
18. Zuhail A. An Evaluation of the Administrative Reform Efforts in Turkey. *Mediterranean Journal os Social Sciences.* 2015;6.